



## FLY SCREEN MESH



Our fly screen meshes are manufactured from woven fibreglass strands, the strands are ultrasonically welded to securely lock them together and they are then coated in PVC. This produces a very strong mesh which is very durable for day to day usage and is rot proof for use in building structures.

The mesh is flexible and can be cut with scissors to the required dimension.

### SPECIFICATION

18 x 16 standard mesh

Construction - fibreglass / PVC ultrasonically welded

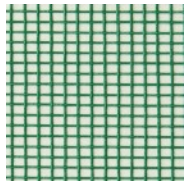
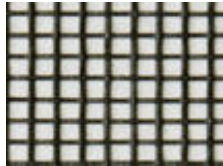
Density - warp 18 / weft 16 (18 / 16 threads per inch), approx 66% openness factor

Weight - grams per sq mtr / ca. 12g +/- 10%

Thickness - ca 0.29mm +/- 0.05%

Resistance to temperature - -35c to +80c

The 18/16 mesh is available in Black, Grey and White in 1.2 mtr wide rolls, the 1.8 x 30 mtr rolls are available in Black. The midge meshes are available in Black and Grey and the Pollen in Black, all the meshes can be purchased in full roll quantities or by metre lengths.





## SPECIFICATION

20 /20 midge mesh

Construction - fibreglass / PVC ultrasonically welded

Density - warp 20 / weft 20 (20 / 20 threads per inch), approx 56% openness factor

Weight - grams per sq mtr / ca. 15g +/- 10%

Thickness - ca 0.29mm +/- 0.05%

Resistance to temperature - -35c to +80c

With over 500 different types of midges in the UK it is impossible to exclude all types, samples are available on request to test your particular needs.

## SPECIFICATION

PET MESH

The mesh is 1.2 metres wide and is weaved from PVC coated fibreglass giving a 16 x 14 gauge. The mesh is triple coated to give it extra strength against pets and it is available in Black colour only.

Construction - fibreglass / PVC ultrasonically welded

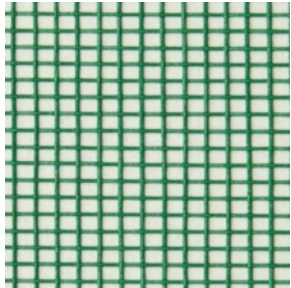
Density - warp 16 / weft 14 , approx 50% openness factor

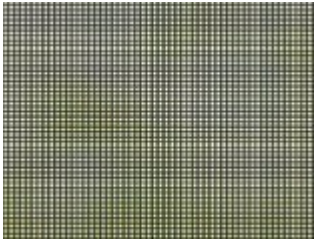
Weight - grams per sq mtr / ca. 20g +/- 10%

Thickness - ca 0.31mm +/- 0.05%

Resistance to temperature - -35c to +80c

Available in 1.2 mts wide either per metre or in full roll lengths of 30 mts in length and can only be used in the fixed panel range of fly screens. Please refer to the specifications for each individual product for specific mesh details.





## POLLEN MESH SPECIFICATION

Micrometer woven filter double structure pollen mesh

Construction - 100% Polyester

Tear strength, length - 231 N/5cm ISO 13934- 1:1999

Tear strength, width - 828 N/5cm

Air permeability - (20 Pa) in L/m<sup>3</sup>x s - 1600 ISO 9237:1995

Air permeability - (25 Pa) in L/m<sup>3</sup>x s - 1880

Density - 200 mesh lines per inch, approx 45% openness factor

Weight - grams per sq mtr / ca. 18g +/- 10%

Thickness - ca 0.29mm +/- 0.05%

Resistance to temperature - -35c to +80c

Available in 1.2 mts wide either per metre or in full roll lengths of 30 mts in length and can be used in the fixed panel range of fly screens.





## ROLLER FLY SCREEN MESH SPECIFICATION

18 x 16 standard mesh

Construction - fibreglass / PVC ultrasonically welded

Density - warp 18 / weft 16 (18 / 16 threads per inch), approx 66% openness factor

Weight - grams per sq mtr / ca. 12g +/- 10%

Thickness - ca 0.29mm +/- 0.05%

Resistance to temperature - -35c to +80c

20 x 30 midge mesh

Construction - fibreglass / PVC ultrasonically welded

Density - warp 20 / weft 30, approx 56% openness factor

Weight - grams per sq mtr / ca. 18g +/- 10%

Thickness - ca 0.29mm +/- 0.05%

Resistance to temperature - -35c to +80c

