



Premier Screens Ltd

Roller Fly Screens

TEL: 01254 386776

Thank you for purchasing one of our roller fly screens we are confident that you won't be disappointed with the quality and ease of installation. Your screen will be delivered with the cassette with all return springs, bearings and brakes if selected, ready assembled. The 2 side guides will be separate but these simply slot onto the cassette in a matter of seconds.

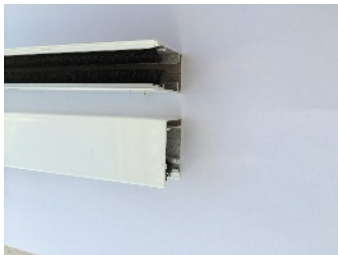
Each roller fly screen order will come with the following components



Ready assembled cassette x 1



Screws or silicone



Side guides x 2



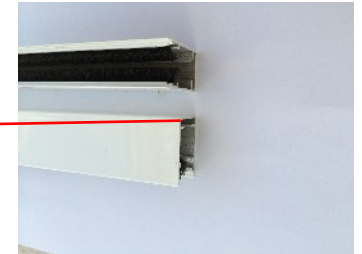
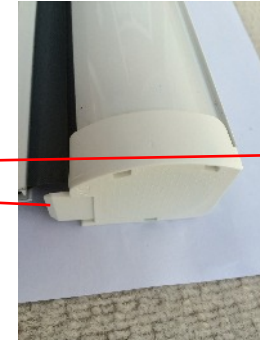
Screws and cover caps if face fitting



Roller Fly Screens

Your screen will arrive in 3 sections, the cassette will be ready assembled and the 2 side guides.

Simply slide the side guides onto the end of the cassette



External

The side guides will have catches at the base, either the external catch or internal, whichever you have chosen.

The external catch faces into your room



Internal

The internal catch has 2 cut out slots in the base, make sure that these go nearest to the window as this signifies where the internal catch is located.

If you have opted for a base bar then this will be screwed onto the window frame to hold the screen in place.





Premier Screens Ltd

Roller Fly Screens

TEL: 01254 386776

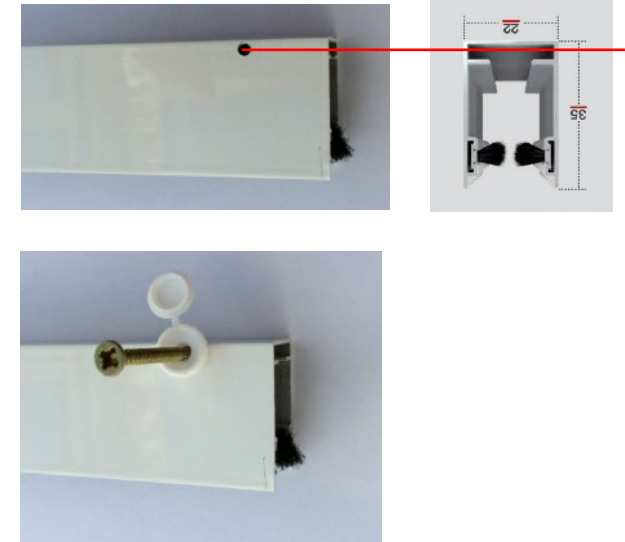
FACE FITTING

This method of installation is when the roller screen is installed directly onto the window frame.

To install the roller fly screens onto the face of the window frame you have 2 options, either silicone or screw fit. To screw fit the screens you will need to drill 2 holes in the side guides ensuring the screw goes between the lugs.

The using the screws and cover caps secure the unit to the window frame.

The silicone installation is described on the following pages.



The screen is fixed directly to the face of the window frame.



Premier Screens Ltd

Roller Fly Screens

TEL: 01254 386776

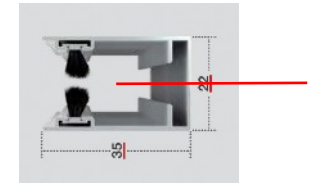
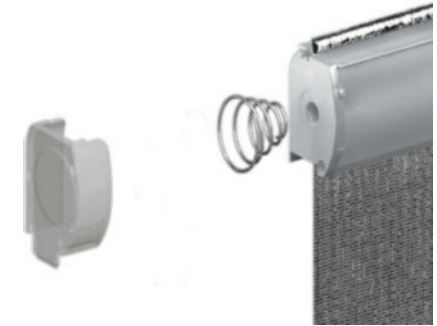
REVEAL INSTALLATION

This is when the screen is installed into the recess of the window, the screen can be set back away from the window or can be against the window frame, depending on your choice. If you were covering a large window opening with 2 openers you can set the screen back in the recess so that the screen can be operated with only one window open.

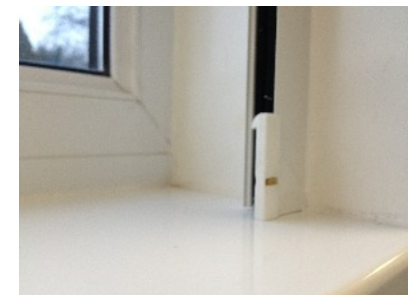
If you have opted for reveal install the end caps on the cassette will have expander springs inside. Simply compress the end caps offer into the reveal and then release.

The screen can then either be screwed into position or siliconed.

If you are using screws to secure the screen then you will need to drill through the side wall of the guide and then secure to your wall with the supplied screws and wall plugs.



The side guide is fixed directly to the recess wall surrounding the window





Roller Fly Screens

SILICONE INSTALLATION



Run a 10mm bead of silicone around the top and sides of the window frame

Once you have placed the cassette onto the side guides offer it to the

Once the cassette and guides are slotted together offer them onto the window frame and push firmly to seal to the silicone adhesive, checking the operation of the screen once in place.

Don't worry if you need to adjust the screen as the silicone will stay flexible for around 20 minutes.

If you ever need to remove the screen just run a sharp blade between the screen and frame, the silicone will never set hard.

